



**REGIONAL SPECIALISED METEOROLOGICAL CENTRE-TROPICAL CYCLONES, NEW DELHI
TROPICAL WEATHER OUTLOOK**

DEMS-RSMC TROPICAL CYCLONES NEW DELHI DATED 14.10.2021

TROPICAL WEATHER OUTLOOK FOR NORTH INDIAN OCEAN (THE BAY OF BENGAL AND ARABIAN SEA) VALID FOR NEXT 120 HOURS ISSUED AT 0600 UTC OF 14.10.2021 BASED ON 0300 UTC OF 14.10.2021.

BAY OF BENGAL:

UNDER THE INFLUENCE OF THE CYCLONIC CIRCULATION OVER EASTCENTRAL BAY OF BENGAL & NEIGHBOURHOOD, A LOW PRESSURE AREA FORMED OVER THE SAME REGION AT 0000 UTC OF TODAY, THE 14TH OCTOBER 2021. AT 0300 UTC OF TODAY THE 14TH OCTOBER, IT LAY OVER NORTHERN PARTS OF CENTRAL BAY OF BENGAL & NEIGHBOURHOOD. IT IS LIKELY TO MOVE WEST-NORTHWESTWARDS AND REACH SOUTH ODISHA-NORTH ANDHRA PRADESH COASTS DURING NEXT 24 HOURS.

SCATTERED LOW AND MEDIUM CLOUDS WITH EMBEDDED INTENSE TO VERY INTENSE CONVECTION OVER NORTHWEST BAY OF BENGAL (BOB), WESTCENTRAL BOB, SOUTHEAST BOB AND ANDAMAN SEA. SCATTERED LOW AND MEDIUM CLOUDS WITH EMBEDDED MODERATE TO INTENSE CONVECTION OVER REST OF BOB.

PROBABILITY OF CYCLOGENESIS (FORMATION OF DEPRESSION) DURING NEXT 120 HRS:

| 24 HOURS | 24-48 HOURS | 48-72 HOURS | 72-96 HOURS | 96-120 HOURS |
|----------|-------------|-------------|-------------|--------------|
| NIL | NIL | NIL | NIL | NIL |

ARABIAN SEA:

UNDER THE INFLUENCE OF THE CYCLONIC CIRCULATION OVER EASTCENTRAL ARABIAN SEA OFF KARNATAKA COAST, A LOW PRESSURE AREA FORMED OVER EASTCENTRAL & ADJOINING SOUTHEAST ARABIAN SEA OFF LAKSHADWEEP AREA AT 0000 UTC OF TODAY THE 14TH OCTOBER, 2021. AT 0300 UTC OF TODAY THE 14TH OCTOBER, IT PERSISTED OVER THE SAME REGION.

CONVECTION ASSOCIATED WITH THE LOW PRESSURE AREA OVER CENTRAL ARABIAN SEA AND NEIGHBOURHOOD. ASSOCIATED BROKEN LOW AND MEDIUM CLOUDS WITH EMBEDDED INTENSE TO VERY INTENSE CONVECTION OVER AREA BET LAT 10.0N TO 15.0N LONG 63.0E TO 70.0E. MINIMUM CLOUD TOP TEMPERATURE MINUS 86 DEG C.

SCATTERED TO BKN LOW AND MEDIUM CLOUDS WITH EMBEDDED INTENSE TO VERY INTENSE CONVECTION OVER EASTCENTRAL AND ADJOINING SOUTHEAST ARABIAN SEA.

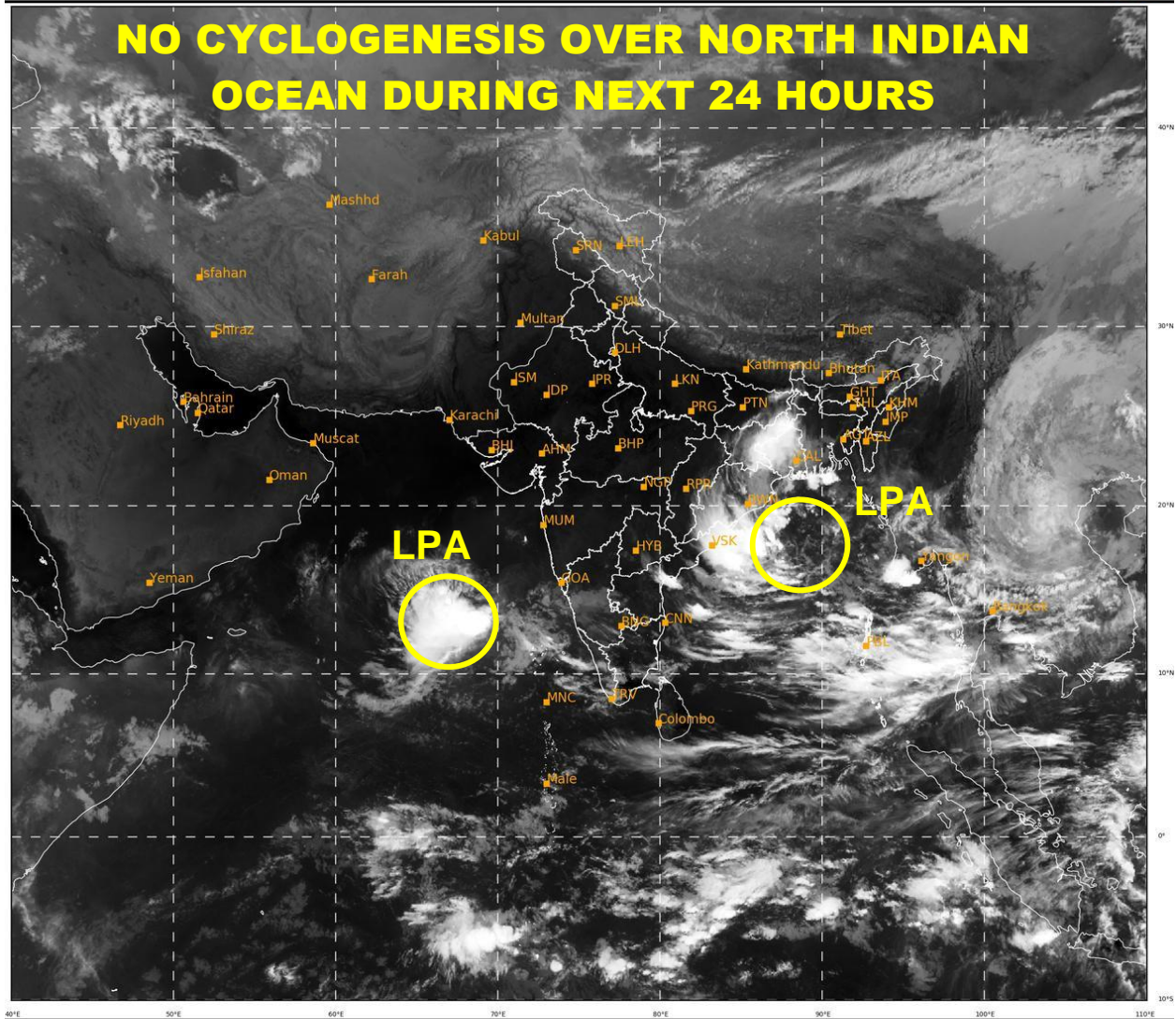
PROBABILITY OF CYCLOGENESIS (FORMATION OF DEPRESSION) DURING NEXT 120 HRS:

| 24 HOURS | 24-48 HOURS | 48-72 HOURS | 72-96 HOURS | 96-120 HOURS |
|----------|-------------|-------------|-------------|--------------|
| NIL | NIL | NIL | NIL | NIL |

REMARKS: NIL

SAT : INSAT-3D IMG
IMG_TIR1 10.8 um
LIC Mercator

14-10-2021/(0300 to 0326) GMT
14-10-2021/(0830 to 0856) IST



495

926

IMD,DELHI

*LPA STANDS FOR LOW PRESSURE AREA